

Chapter 6

RADIODIAGNOSTIC APPROACH TO TRAUMATOLOGY IN PEDIATRIC DENTISTRY PART 2

Hilal ÖZBEY¹

Burak Kerem APAYDIN²

In the first part of radiodiagnostic approach to traumatology in pediatric dentistry; injuries to the hard dental tissues were discussed. In the second part; injuries to the periodontal tissues, injuries to supporting bone and injuries to gingiva or oral mucosa will be discussed. In order to remind, the trauma classification (World Health Organization, 1995; Andreasen, Andreasen & Andersson, 2007) is listed below.

1. Injuries to the Hard Dental Tissues and the Pulp
 - Enamel Infraction
 - Enamel Fracture (Uncomplicated Crown Fracture)
 - Enamel Dentin Fracture (Uncomplicated Crown Fracture)
 - Complicated Crown Fracture (Enamel Dentin Pulp Fracture)
 - Uncomplicated crown root fracture (Crown Root Fracture without Pulp Exposure)
 - Complicated Crown Root Fracture (Crown Root Fracture with Pulp Exposure)
 - Root fracture
2. Injuries to the Periodontal Tissues
 - Concussion
 - Subluxation
 - Extrusive Luxation
 - Lateral Luxation
 - Intrusive Luxation
 - Avulsion
3. Injuries to Supporting Bone
 - Comminution of the Maxillary Alveolar Socket
 - Comminution of the Mandibular Alveolar Socket

¹ Assist. Prof. Dr., Pamukkale University, hilalozbey@gmail.com

² Assist. Prof. Dr., Pamukkale University, drkeremapaydin@gmail.com

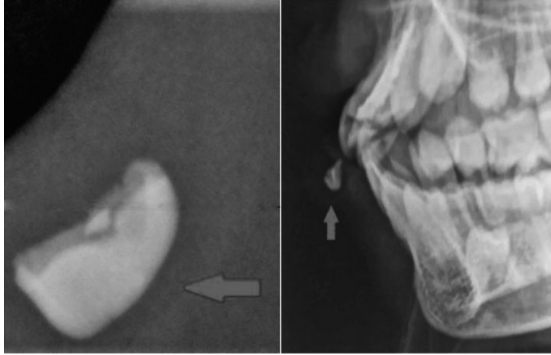


Figure 24. Arrow showing fracture fragment of tooth in lower lip (Agrawal& al., 2005)

REFERENCES

- Agrawal V. K., Saraswati S., Konark, Suharwordy G.A. (2016). Fractured Tooth Fragment Embedded In Lower Lip After Trauma : Two Case Reports. *Indian Dentist Research and Review*, 12 (3), 7-11.
- Andersson, L., Andreasen, J. O., Day, P., Heithersay, G., Trope, M., DiAngelis, A. J., Kenny, D. J., Sigurdsson, A., Bourguignon, C., Flores, M. T., Hicks, M. L., Lenzi, A. R., Malmgren, B., Moule, A. J., Tsukiboshi, M. (2012). International Association of Dental Traumatology guidelines for the management of traumatic dental injuries: 2. Avulsion of permanent teeth. *Dental Traumatol*, 28, 88–96.
- Andreasen, J. O., Andreasen, F.M., Andersson, L. (2007). *Textbook and color atlas of traumatic injuries to the teeth*. (Fourth edit). Copenhagen: Blackwell Munksgaard.
- Cameron, A. C., Widmer, R. P. (2008). *Handbook of Pediatric Dentistry*. (Third edit). E book: Elsevier Mosby.
- DiAngelis, A. J., Andreasen, J. O., Ebeleseder, K. A., Kenny, D. J., Trope, M., Sigurdsson, A., Andersson, L., Bourguignon, C., Flores, M. T., Hicks, M. L., Lenzi, A. R., Malmgren, B., Moule, A. J., Pohl, Y., Tsukiboshi, M. (2012). International Association of Dental Traumatology guidelines for the management of traumatic dental injuries: 1. Fractures and luxations of permanent teeth. *Dental Traumatol*, 28 (6), 2–12.
- Ghom, A. G., Ghom, S. A. (2016). *Textbook of Oral Radiology*. (Second edit). India: Elsevier.
- Malmgren, B., Andreasen, J. O., Flores, M. T., Robertson, A., DiAngelis, A. J., Andersson, L., Cavalleri, G., Cohenca, N., Day, P., Hicks, M. L., Malmgren, O., Moule, A. J., Onetto, J., Tsukiboshi, M. (2012). International Association of Dental Traumatology guidelines for the management of traumatic dental injuries: 3. Injuries in the primary dentition. *Dental Traumatol*, 28 (3), 174–182.
- Ozdede, M., Sarikir, C., Akarslan, Z., Peker, I. (2016). Maksillofasiyal fraktürlerin konik ışınli bilgisayarli tomografi ile retrospektif olarak deęerlendirilmesi. *Atatürk Üniv. Diş Hek. Fak. Derg.* 1 (26), 8-14.
- Whaites, E., Drage, N. (2013). *Essentials of dental radiography and radiology*. (Fifth edit). E book: Churchill Livingstone Elsevier.
- White, S. C., Pharoah, M. J. (2014). *Oral Radiology Principles and Interpretation*. (Seventh edit). Missouri: Elsevier Mosby.
- World Health Organization. (1995). *Application of international classification of diseases to dentistry and stomatology, ICD-DA*. (Third edit). Geneva: World Health Organization.