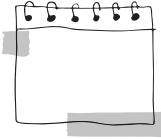


## Bölüm 12

# Kronik Hastalıklar ve Halk Sağlığı Hemşireliği Yaklaşımları

Nida EFETÜRK<sup>1</sup>



### Öğrenim Hedefleri

- ÖĞRENİM HEDEFLERİ
- Kronik hastalık kavramını tanımlayabilir.
- Kronik hastalıklara kuramsal bakış açısı geliştirir.
- Kronik hastalıklara ilişkin mevcut durumu bilir.
- Birinci basamak sağlık hizmetlerinde takip edilen kronik hastalıkları bilir.
- Kronik hastalığı olan bireylere yaklaşımda halk sağlığı uygulamalarını anlayabilir.
- Kronik hastalıklarda birinci basamak sağlık hizmetlerinin önemini anlayabilir.

<sup>1</sup> Öğr. Gör., İstanbul Okan Üniversitesi, Sağlık Hizmetleri Meslek Yüksekokulu e-mail: nidaunal@gmail.com

## KAYNAKLAR

- American Diabetes Association (ADA). (2021). Statistics About Diabetes. <https://www.diabetes.org/resources/statistics/statistics-about-diabetes>
- American Diabetes Association (ADA). (2018). Standards of medical care in diabetes—2018. *Diabetes Care*, 41(Supplement 1), S1-S2.
- American Diabetes Association (ADA). (2021). Standards of Medical Care in Diabetes. *Diabetes Care*. 44(Suppl.1):S1-S232.
- American Nurses Association (ANA). (2019). Public health nursing. (<https://www.nursingworld.org/practice-policy/workforce/public-health-nursing/>)
- Anderson, B. O., Cazap, E., El Saghir, N. S., Yip, C. H., Khaled, H. M., Otero, I. V., & Adebamowo, C. A. (2013). Optimisation of breast cancer management in low-resource and middle-resource countries: Executive summary of the Breast Health Global Initiative consensus, 2010. *The Lancet Oncology*, 14(4), e142-e154.
- Arnett, D. K., Blumenthal, R. S., Albert, M. A., Buroker, A. B., Goldberger, Z. D., Hahn, E. J. & Smith, S. C. (2019). 2019 ACC/AHA guideline on the primary prevention of cardiovascular disease: executive summary: a report of the American College of Cardiology/American Heart Association Task Force on Clinical Practice Guidelines. *Journal of the American College of Cardiology*, 74(10), 1376-1414.
- Aşık, F. (2021). Birinci basamak sağlık hizmetleri ve kronik hastalıklar. *Acıbadem Üniversitesi Sağlık Bilimleri Dergisi*, 12(3), 356-361.
- Avcı, E. (2021). Türkiye’de Kardiyovasküler Hastalıklar ve Risk Faktörleri: Son 30 Yılda Neler Değişti? *Türk Kardiyol Dern Ars*, 49(2), 96-103. doi: 10.5543/tkda.2021.89213
- Barber, S., & Brett, C. (2017). Chronic disease management in primary care: from evidence to policy. *Medical Journal of Australia*, 207(10), 431-435.
- Beltran-Sanchez, H., Preston, S. H., & Canudas-Romo, V. (2008). An integrated approach to cause-of-death analysis: cause-deleted life tables and decompositions of life expectancy. *Demographic Research*, 19, 1323. <https://doi.org/10.4054/DemRes.2008.19.35>
- Benjamin, E. J., Muntner, P., Alonso, A., Bittencourt, M. S., Callaway, C. W., Carson, A. P. & de Ferranti, S. D. (2019). Heart Disease and Stroke Statistics—2019 Update: A Report From the American Heart Association. *Circulation*, 139(10), e56-e528.
- Bodenheimer, T., & Mason, D. (2016). Registered nurse involvement in primary care. *Nursing Outlook*, 64(2), 145-152.
- Centers for Disease Control and Prevention (CDC). (2019). National Center for Chronic Disease Prevention and Health Promotion. (<https://www.cdc.gov/chronicdisease/index.htm>)
- Centers for Disease Control and Prevention (CDC). (2021). Chronic Disease Overview. <https://www.cdc.gov/chronicdisease/overview/index.htm>
- Civek S, Akman M. (2022). Dünyada ve Türkiye’de kardiyovasküler hastalıkların sıklığı ve riskin değerlendirilmesi. *Jour Turk Fam Phy*, 13 (1): 21-28. Doi: 10.15511/tjtfp.22.00121.
- Çalışkan, N., & Budak, E. (2015). Kronik obstrüktif akciğer hastalığı olan hastalarda yaşam kalitesi ve hastalık şiddeti arasındaki ilişki. *Solunum Hastalıkları Dergisi*, 26(1), 13-20.
- Çevirme, A., & Gökçay, G. (2020). The impact of an Education-Based Intervention Program (EBIP) on dyspnea and chronic self-care management among chronic obstructive

- pulmonary disease patients. A randomized controlled study. *Saudi medical journal*, 41(12), 1350–1358. <https://doi.org/10.15537/smj.2020.12.25570>
- Çınar, P., Yıldırım, H. H., & Kocabey, G. (2016). The role of primary healthcare providers in cancer prevention and early detection: A systematic review. *Asian Pacific Journal of Cancer Prevention*, 17(12), 4917-4925.
- Denny L, de Sanjose S, Mutebi M, Anderson BO, Kim J, Jeronimo J et al. (2017). Interventions to close the divide for women with breast and cervical cancer between low-income and middle-income countries and high-income countries. *Lancet*, 389(10071):861–70 (<https://www.ncbi.nlm.nih.gov/pubmed/27814963>).
- Global Initiative for Chronic Obstructive Lung Disease (GOLD). (2021). Global strategy for the diagnosis, management, and prevention of chronic obstructive pulmonary disease. [https://goldcopd.org/wp-content/uploads/2021/02/GOLD-REPORT-2021-v1.1-25Feb2021\\_WMV.pdf](https://goldcopd.org/wp-content/uploads/2021/02/GOLD-REPORT-2021-v1.1-25Feb2021_WMV.pdf)
- Gohil, P., & Patel, B. (2019). Role of public health nurses in the management of chronic disease. *Journal of Nursing Education and Practice*, 9(9), 72-77.
- Hajarizadeh, B., & Lam, E. W. (2016). Detection and management of breast cancer in primary care. *Journal of Thoracic Disease*, 8(Suppl 10), S849-S854.
- International Agency for Research on Cancer (IARC). (2020). *Cancer Today*. (<https://gco.iarc.fr/today/home>)
- International Diabetes Federation (IDF). (2021). *IDF Diabetes Atlas*, 10th edition. (<https://www.diabetesatlas.org>)
- International Diabetes Federation (IDF). (2019). *IDF Diabetes Atlas*, 9th edition. Brussels, Belgium. (<https://www.diabetesatlas.org>)
- Jindal, S. K. (2014). Chronic obstructive pulmonary disease in non-smokers: A hidden but preventable epidemic. *Indian Journal of Medical Research*, 139(5), 603–605.
- Karagöz, A., & Özden, D. (2022). The Effect of a Nurse-Supported Diabetes Education Program on Self-Care Skills of Individuals with Type 2 Diabetes: A Controlled Randomized Study. *Holistic Nursing Practice*, 36(1), 11-20.
- Mielke, M. M., Ferretti, M. T., Iulita, M. F., Hayden, K., & Khachaturian, A. S. (2018). Sex and gender in Alzheimer's disease – does it matter? *Alzheimer's & Dementia*, 14(9), 1101. <https://doi.org/10.1016/j.jalz.2018.06.3063>
- National Institute for Health and Care Excellence (NICE). (2019). Multimorbidity: clinical assessment and management. NICE guideline [NG56]. (<https://www.nice.org.uk/guidance/ng56>)
- National Institute on Aging. (2021). *Healthy Aging: Overview*. <https://www.nia.nih.gov/health/healthy-aging>
- Onat, A., & Can, G. (2017). Erişkinlerimizde kalp hastalıkları prevalansı, yeni koroner olaylar ve kalpten ölüm sıklığı. In A. Onat (Ed.), *TEKHARF 2017 Tıp Dünyasının Kronik Hastalıklara Yaklaşımına Öncülük* (pp. 21-28). İstanbul, Logos yayıncılık Tic. A.Ş.
- Özpelit, E. (2014). Diabetes mellitus and nursing. *Turkish Journal of Endocrinology and Metabolism*, 18(3), 57-62.
- Öztürk, S., Aydın, N., & Yıldırım, S. (2019). The role of public health nurses in the management of diabetes mellitus. *Journal of Ege University Nursing Faculty*, 35(1), 26-37.
- Satman I, Omer B, Tutuncu Y, et al. (2019). Türkiye Diyabet Prevalans Çalışması 2019 (TURDEP 2019) [Turkish Diabetes Prevalence Study 2019]. *Turkish Journal of Endocrinology and Metabolism*. 2020;24(Suppl 1):1-96.

- Score working group E. S. C. (2021). Cardiovascular risk collaboration. SCORE2 risk prediction algorithms: new models to estimate 10-year risk of cardiovascular disease in Europe. *Eur Heart J*, 42(25):2439-54.
- Serrano-Gallardo, P., & Gómez-Romero, F. J. (2019). Primary health care and cancer: A systematic literature review. *Journal of Cancer Education*, 34(3), 420-429.
- T.C. Sağlık Bakanlığı. (2020). Kanser tarama programları. (<https://hsgm.saglik.gov.tr/tr/kanser-tarama-programlari.html>)
- The Lancet Oncology. (2020). Primary care for patients with cancer. ([https://www.thelancet.com/journals/lanonc/article/PIIS1470-2045\(20\)30080-5/fulltext](https://www.thelancet.com/journals/lanonc/article/PIIS1470-2045(20)30080-5/fulltext))
- Turkish Thoracic Society. (2016). Türkiye’de astım ve KOAH epidemiyolojisi çalışması. [http://www.toraks.org.tr/uploadFiles/book/Turkiyede\\_astim\\_ve\\_KOAH\\_epidemiyolojisi\\_calismasi\\_2016.pdf](http://www.toraks.org.tr/uploadFiles/book/Turkiyede_astim_ve_KOAH_epidemiyolojisi_calismasi_2016.pdf)
- Türk Kardiyoloji Derneği (TKD). (2021). Kardiyovasküler hastalıkların önlenabilir risk faktörleri. [http://tkd.org.tr/wp-content/uploads/2021/06/Risk\\_Faktorleri.pdf](http://tkd.org.tr/wp-content/uploads/2021/06/Risk_Faktorleri.pdf)
- Türkiye İstatistik Kurumu (2019). Sağlık İstatistikleri Ölüm ve Ölüm Nedeni İstatistikleri (<https://data.tuik.gov.tr/Bulten/Index?p=Olum-ve-Olum-Nedeni-Istatistikleri-2019-33710>)
- Türkiye İstatistik Kurumu (TÜİK). (2020). Kanser İstatistikleri, 2020. (<https://data.tuik.gov.tr/Bulten/Index?p=Kanser-Istatistikleri-2020-37210>)
- Türkiye İstatistik Kurumu. (2020). Ölüm Nedeni İstatistikleri, 2019. (<https://data.tuik.gov.tr/Bulten/Index?p=olum-nedeni-istatistikleri-2019-37347>)
- Türkiye İstatistik Kurumu. Türkiye Sağlık Araştırması 2019. (<https://data.tuik.gov.tr/Bulten/Index?p=Saglik-Arastirmasi-2019-33832>)
- Uysal, N., Bozkurt, A. I., & Yüceşahin, M. M. (2018). Public health nursing care for diabetes patients. *Journal of Diabetes Nursing*, 22(2), 78-86.
- Üner S, Balcılar M. (2018). Türkiye Hanehalkı Sağlık Araştırması: Bulaşıcı Olmayan Hastalıkların Risk Faktörleri Prevalansı 2017 (STEPS). Ankara, Dünya Sağlık Örgütü Türkiye Ofisi, 2.
- World Health Organization (WHO). (2020). Cancer. ([https://www.who.int/health-topics/cancer#tab=tab\\_1](https://www.who.int/health-topics/cancer#tab=tab_1))
- World Health Organization (WHO). (2016). Global report on diabetes. (<https://www.who.int/diabetes/global-report/en/>)
- World Health Organization (WHO). (2017). Chronic obstructive pulmonary disease (COPD). (<https://www.who.int/respiratory/copd/burden/en/>)
- World Health Organization (WHO). (2021). Chronic obstructive pulmonary disease (COPD). ([https://www.who.int/news-room/fact-sheets/detail/chronic-obstructive-pulmonary-disease-\(copd\)](https://www.who.int/news-room/fact-sheets/detail/chronic-obstructive-pulmonary-disease-(copd)))
- World Health Organization (WHO). (2018). Noncommunicable diseases. (<https://www.who.int/news-room/fact-sheets/detail/noncommunicable-diseases>)
- World Health Organization (WHO). (2019). Chronic diseases and health promotion. ([https://www.who.int/chp/about/integrated\\_cd/en/](https://www.who.int/chp/about/integrated_cd/en/))
- World Health Organization (WHO). (2019). World Health Statistics 2019: Monitoring health for the SDGs, sustainable development goals. ([https://www.who.int/gho/publications/world\\_health\\_statistics/2019/en/](https://www.who.int/gho/publications/world_health_statistics/2019/en/))
- World Health Organization (WHO). (2021). Integrated care for chronic conditions. (<https://www.who.int/publications/i/item/integrated-care-for-chronic-conditions>)

- World Health Organization (WHO). (2021). Mortality rate, infant (per 1,000 live births). (<https://www.who.int/healthinfo/statistics/indmaternalmortality/en/>)
- World Health Organization (WHO). (2021). The top 10 causes of death. (<https://www.who.int/news-room/fact-sheets/detail/the-top-10-causes-of-death>)
- Yaman, H., & Aşık, E. (2016). Diabetes and public health nursing. *Journal of Anatolia Nursing and Health Sciences*, 19(2), 146-154.