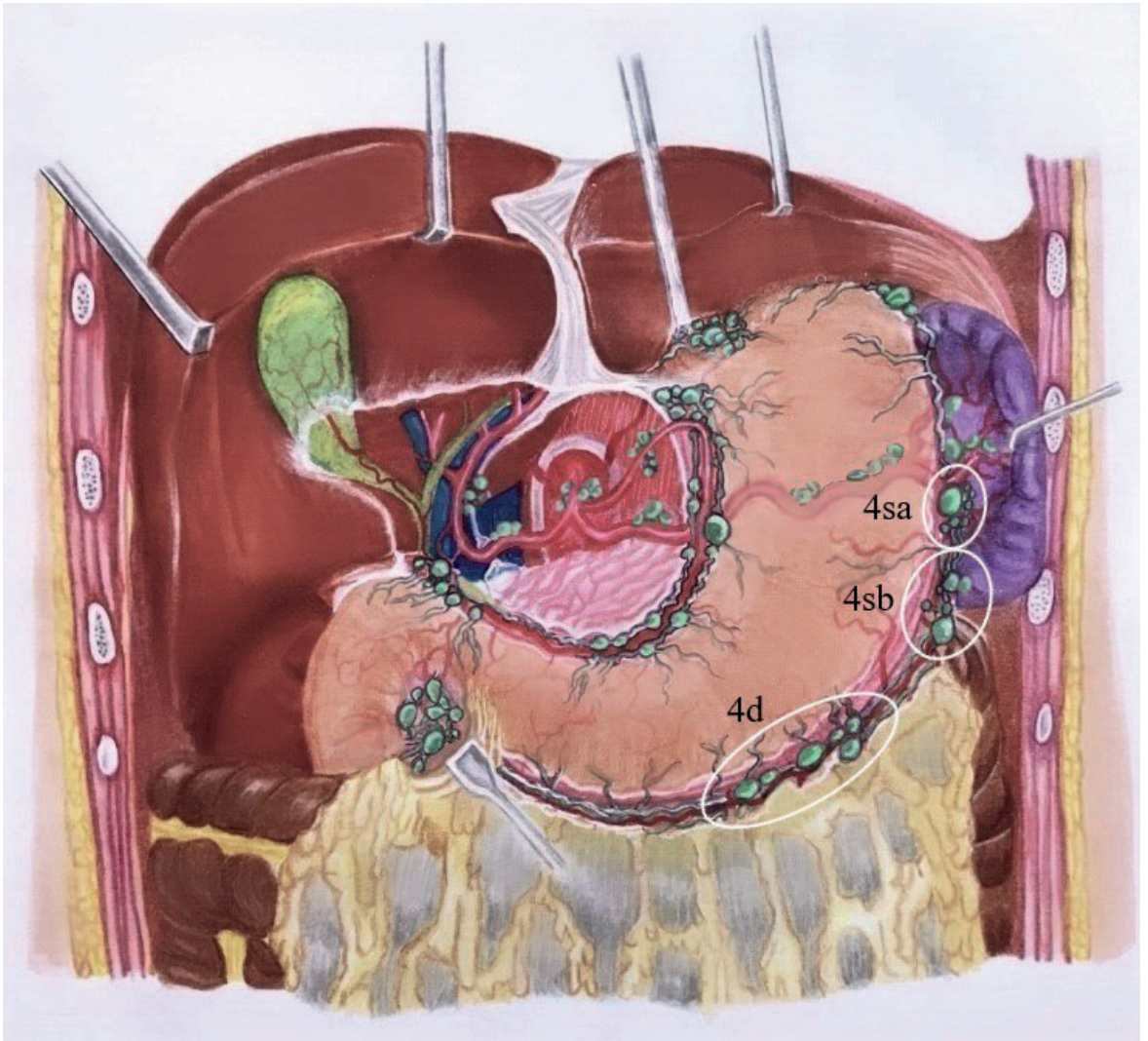


Konu
2

Büyük Kurtavur (4sa, 4sb, 4d) ve Sol Gastroepiploik Arter- ven Diseksiyonu

Dr. Ahmet Sencer ERGİN, Dr. Salim DEMİRÇİ



Şekil 1: 4sa, 4sb ve 4d lenf nodları.

Kaynaklar

1. KL Moore, AF Dalley II, and AMR Agur. Clinically oriented anatomy, Eight edition. 2018.
2. AE Hertzler. "The omentum," J. Am. Med. Assoc. vol. 86, no. 23, p. 1785, 1926.
3. T Sano and Y Koderu. "Japanese gastric cancer treatment guidelines 2010 (ver. 3)" Gastric Cancer, vol. 14, no. 2, pp. 113–123, 2011.
4. A Hagiwara et al. "Complete omentectomy and extensive lymphadenectomy with gastrectomy improves the survival of gastric cancer patients with metastases in the adjacent peritoneum," Hepato-gastroenterology.1998.
5. JD Phillips, AP Nagle and NJ Soper. Laparoscopic Gastrectomy for Cancer, vol. 22, no. 1. 2013.
6. CM Huang, CH Zheng, P Li et al. Atlas of Laparoscopic Gastrectomy for Gastric Cancer. 2019.
7. T Etoh, M Inomata, N Shiraishi et al. "Minimally invasive approaches for gastric cancer - Japanese experiences," Journal of Surgical Oncology. 2013.
8. V Isabella, E Marotta and F Bianchi. "Ischemic necrosis of proximal gastric remnant following subtotal gastrectomy with splenectomy" J. Surg. Oncol. 1984.