

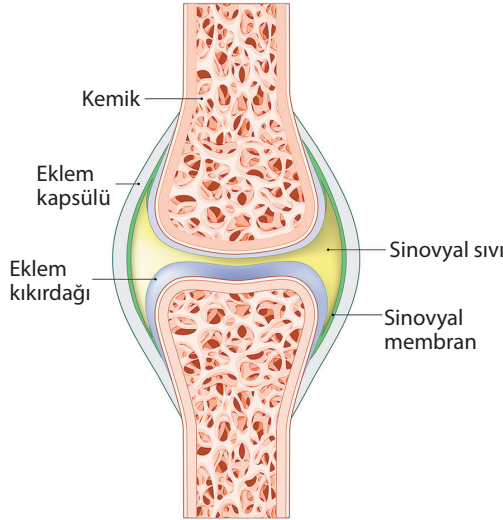


## SİNOVYAL SIVI ANALİZİ

Hatice SAYAN<sup>1</sup>

### GİRİŞ

Tipik bir sinovyal eklem; sinovyum, eklem kıkırdağı, menisküs, çizgili kaslar, tendonlar, ligamanlar, bursalar ve subkondral kemikten oluşur. Sinovyum, kıkırdakla eklemleşen yüzeylerin dışında tüm intraartiküler yüzeyi örter (Şekil 1).



**Şekil 1.** Sinovyal eklemi oluşturan yapıların koronal kesitte görünümü.

<sup>1</sup> Uzm. Dr., Şanlıurfa Mehmet Akif İnan Eğitim ve Araştırma Hastanesi, Fiziksel Tıp ve Rehabilitasyon Kliniği, h.sayan985@gmail.com

## KAYNAKLAR

1. Gatter RA, Schymacher HR. *A Practical Handbook of Joint Fluid Analysis*. 2nd ed. Philadelphia: Lea&Febiger; 1991.
2. Freemont AJ, Mangham DC. Synovial fluid analysis. In: Hochberg MC, Gravallese EM, Silman AJ (eds.) *Rheumatology*. 7th ed. Philadelphia: Elsevier; 2019. p. 263-267.
3. Uptodate. Sholter DE, Russell AS: *Synovial fluid analysis*. Available from: <https://www.uptodate.com/contents/synovial-fluid-analysis> (Accessed: 15th September 2021).
4. McCutchan HJ, Fisher RC. Synovial leukocytosis in infectious arthritis. *Clin Orthop Relat Res*. 1990; 226.
5. Ghanem E, Houssock C, Pulido L, et al. Determining "true" leukocytosis in bloody joint aspiration. *J Arthroplasty*. 2008; 23:182.
6. Miller JM, Binnicker MJ, Campbell S, et al. A Guide to Utilization of the Microbiology Laboratory for Diagnosis of Infectious Diseases: 2018 Update by the Infectious Diseases Society of America and the American Society for Microbiology. *Clin Infect Dis*. 2018; 67:1.
7. Pascual E, Jovani V. Synovial fluid analysis. *Best Practice&Research Clinical Rheumatology* 2005; 19:371-86.
8. Tüzün Ş. Artrosentez ve sinovyal sıvı analizi. In: Beyazova M, Kutsal YG (eds.) *Fiziksel Tıp ve Rehabilitasyon*. 3th ed. Ankara: Güneş; 2016. p. 521-527.
9. Mundt LA, Shanahan K. *Graff's Textbook of Routine Urinalysis and Body Fluids*. 2nd. ed. Philadelphia: Lippincott; 2009.
10. Courtney P, Doherty M. Joint aspiration and injection and synovial fluid analysis. In: Deodhar A (ed.) *Best Practice&Research Clinical Rheumatology*. 23th ed. Elsevier; 2009. p. 161-192.
11. İnal V. Sinovyal sıvı analizi. *Türkiye Klinikleri Dahili Tıp İmmünoloji-Romatoloji Dergisi*. 2006;43:49-52.
12. Chen LX, Clayburne G, Schumacher HR. Update on identification of pathogenic crystals in joint fluid. *Curr Rheumatol Rep*. 2004; 6:217.
13. Goldenberg DL, Reed JI. Bacterial arthritis. *N Engl J Med*. 1985; 312:764.
14. Kocabaş H. Sinovyal sıvı analizi. In: Ataman Ş, Yalçın P (eds.) *Romatoloji*. 1st ed. Ankara: Nobel; 2012. p. 209-213.
15. McGillicuddy DC, Shah KH, Friedberg RP, et al. How sensitive is the synovial fluid white blood cell count in diagnosing septic arthritis? *Am J Emerg Med*. 2007; 25:749.
16. Shmerling RH, Delbanco TL, Tosteson AN, Trentham DE. Synovial fluid tests. What should be ordered? *JAMA* 1990; 264:1009.
17. Dougados M. Synovial fluid cell analysis. *Baillieres Clin Rheumatol* 1996; 10:519.
18. Shmerling RH: Synovial fluid analysis: A critical reappraisal. *Rheum Dis Clin North Am*. 1994;20(2): p. 503-512.
19. Carpenter CR, Schuur JD, Everett WW, et al. Evidence-based diagnostics: adult septic arthritis. *Acad Emerg Med*. 2011;18: p. 781-796.