

# CHAPTER 1

## INTEGRATED MODEL OF INTIMATE PARTNER SELECTION AND REPEATING CYCLE OF VIOLENCE

Emel GENÇ<sup>1</sup>

*“Forget the happenings of the day that is gone, whether they were good or bad, and greet the new sun with confidence that this will be the best day of your life.” (Og Mandino, n.d.)*

### INTRODUCTION

Having born and raised in a male dominant culture in Turkey, I have directly witnessed many times how my mum was beaten up by my dad. I cried each time with my mum, carried her heavy burden in my small body. I heard, “After all, this is your husband, he can either beat or love you” from my grandpa, when my mum complained about my dad to my grandpa, and I felt the broken-heartedness. I have never thought about my future marriage until my advisor asked me, “What will you do if your husband beats you?” I answered her without thinking, “I will be so sad and cry, then continue to my life, as nothing has happened.” That moment was a shock for my advisor and an awaking for me: Why would I marry a man like my dad?!

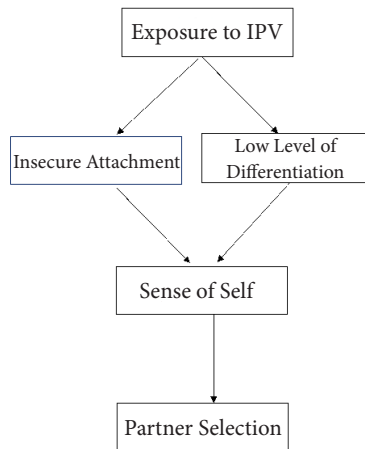
\*\*\*

The family is among the most essential socialization areas in a child’s life (Simons, Gordon Simons, & Ebert Wallace, 2004), as demonstrated in many research, dysfunctional parents mostly have influences on their children’s social, psychical and psychological development (Thornberry, Freeman-Gallant, & Lovegrove, 2009). Possibly, the most dangerous pattern between parent-child relationships can be considered as a violent relationship. A number of studies revealed that childhood exposure to violence in the family of origin has constantly been linked to many negative lasting effects including anxiety, depression, PTSD, low esteem, and antisocial behaviors (Genç et al., 2018; Martinez-Torteya, Bogat, Von Eye, &

---

<sup>1</sup> Assistant Professor of Psychology, Bartin University, emelgenc@bartin.edu.tr,

their family of origin and increasing their levels of differentiation and building a secure relationship with their partners may end up breaking the cycle of violence.



**Figure 1.** Intimate Partner Selection and Cycle of Violence Model

## REFERENCES

- Ainsworth, M. D. S., Blehar, M. C., Waters, E., & Wall, S. (1978). *Patterns of attachment: A psychological study of the strange situation*. Hillsdale, NJ: Erlbaum.
- Babcock, J.C., Jacobson, N.J., Gottman, J.M. & Yerington, T.P. (2000). Attachment, emotional regulation and the function of marital violence: Differences between secure, preoccupied and dismissing violent and non-violent husbands. *Journal of Family Violence*, 15(4), 391- 409.
- Baer, J.C. & Martinez, C.D. (2006). Child maltreatment and insecure attachment: A meta- analysis. *Journal of Reproductive and Infant Psychology*, 24, 187-197.
- Band-Winterstein, T. (2014). The impact of lifelong exposure to ipv on adult children and their aging parents. *Journal of Family Issues*, 35(4), 439-461.
- Bartholomew, K. & Allison, C.J. (2006) An attachment perspective on abusive dynamics in intimate relationships. In M. Mikulincer & G.S. Goodman (Eds.), *Dynamics of romantic love: Attachment, caregiving, and Sex* (pp.103-127). New York: Guilford.
- Bartholomew, K., & Horowitz, L.M. (1991). Attachment styles among young adults: A test of a four-category model. *Journal of Personality and Social Psychology*, 61, 226-244.
- Bartle, S. E., & Rosen, K. H. (1994). Individuation and relationship violence. *American Journal of Family Therapy*, 22, 222-236.
- Bosse, S. van den, & McGinn, M. (2009). *Child\_welfare\_professionals\_\_e.PDF*. *Child Welfare*, 88(6), 49.
- Bowen, M. (1978). *Family therapy in clinical practice*. New York, NY: Jason Aronson.
- Bowlby, J. (1969). *Attachment and loss: Attachment*, 1. New York, NY: Basic Books.
- Buck, N. M. L., Leenaars, E. P. E. M., Emmelkamp, P. M. G., & van Marle, H. J. C. (2012). Explaining the Relationship Between Insecure Attachment and Partner Abuse: The Role of Personality Characteristics. *Journal of Interpersonal Violence*, 27(16), 3149-3170.

- Carpenter, G.L., & Stacks, A.M. (2009). Developmental effects of exposure to intimate partner violence in early childhood: A review of the literature. *Children and Youth Services Review*, 31(8), 831-839.
- Caykoylu, A., Ibioglu, A. O., Taner, Y., Potas, N., & Taner, E. (2011). The correlation of childhood physical abuse history and later abuse in a group of Turkish population. *Journal of Interpersonal Violence*, 26(17), 3455-75.
- Chapple, C.L. (2003). Examining intergenerational violence: violent role modeling or weak parental controls? *Violence and Victims*, 18(2), 143-161.
- Collins, N.L., & Read, S.J. (1990). Adult attachment, working models, and relationship quality in dating couples. *Journal of Personality and Social Psychology*, 58, 644-663.
- Crockett, E. E., Keneski, E., Yeager, K., & Loving, T. J. (2015). Breaking the Mold: Evaluating a Non-Punitive Domestic Violence Intervention Program. *Journal of Family Violence*, 30 (4), 489-499.
- Kukor, D., & McGinn, L. K. (2006). History of child abuse and severity of adult depression: The mediating role of cognitive schema. *Journal of Child Sexual Abuse*, 15 (3), 19-34.
- Dye, M.L., & Eckhardt, C. I. (2000). Anger, irrational beliefs, and dysfunctional attitudes in violent dating relationships. *Violence and Victims*, 15(3), 337-350
- Eagly, A. H. & Wood, W. (1999). The origins of sex differences in human behavior: Evolved dispositions versus social roles. *American Psychologist*, 54, 408- 423.
- Eckhardt, C. I., & Dye, M. L. (2000). The cognitive characteristics of maritally violent men: Theory and evidence. *Cognitive Therapy and Research*, 24 (2), 139-158.
- Fraley, R. C. (2002) Attachment stability from Infancy to Adulthood: Meta-analysis and Dynamic Modeling of Developmental Outcomes. *Personality and Social Psychology Review*, 6(2), 123-151.
- Genç, E., Su, Y., & Durtshi, J. (2018). Moderating factors associated with interrupting the transmission of domestic violence among adolescents. *Journal of Interpersonal Violence*.1-20.
- Grossman, K.E., Grossman, K., Winter, M. & Zimmerman, P. (2002) Attachment relationships and appraisal of partnership: From early experience of sensitive support to later relationship representation. In L. Pulkkinen & A. Caspi (Eds.), *Paths to successful development: Personality in the life course* (pp. 73-105). New York: Cambridge University Press.
- Gottman, J.M., & Levenson R.W. (2002). A two-factor model for predicting when a couple will divorce: Exploratory analyses using 14-year longitudinal data. *Family Process*. 41:83-96.
- Guille, L. (2004). Men who batter and their children: An integrated review. *Aggression and Violent Behavior*, 9(2), 129-163.
- Hazan, C., & Shaver, P. R. (1987). Love and work: An attachment theoretical perspective. *Journal of Personality and Social Psychology*, 59, 270-280.
- Henderson, A.J., Bartholomew, K., Trinke, S.J. & Kwong, M.J. (2005) When loving means hurting: An exploration of attachment and intimate abuse in a community sample. *Journal of Family Violence*, 20(4), 219-230.
- Hill, J., & Nathan, R. (2008). Childhood antecedents of serious violence in adult male offenders. *Aggressive Behavior*, 34(3), 329-338.
- Holman, T. B. & Busby, D. M. (2011). Family-of-origin, differentiation of self and partner, and adult romantic relationship quality. *Journal of Couple & Relationship Therapy*, 10:1, 3-19.
- Kerr, M., & Bowen, M. (1988). *Family evaluation*. New York, NY: Norton.
- Kerr, M. (2003). *One Family's Story: A Primer on Bowen Theory*. Washington, DC: The Georgetown Family Center.
- Kimber, M. , Adham, S. , Gill, S. , McTavish, J. , & MacMillan, H.L. (2018). The association between child exposure to intimate partner violence (IPV) and perpetration of IPV in adulthood-A systematic review. *Child Abuse & Neglect*, 76, 273 - 286.
- Kirsner, B. R., Figueredo, A. J., Jacobs, W. J. (2003). Self, friends, and lovers: Structural relations among Beck Depression Inventory scores and perceived mate values. *Journal of Affective Disorders*, 75, 131-148.

- Kwong, M.J., Bartholomew, K., Henderson, A.J.Z., & Trinke, S.J. (2003). The intergenerational transmission of relationship violence. *Journal of Family Psychology*, 17(3), 288-301.
- Leary, M. R., & Tangney, J. P. (2012). The self as an organizing construct in the behavioral and social sciences. In M. R. Leary & J. P. Tangney (Eds.), *Handbook of self and identity* (2nd ed., pp. 1–18). New York, NY: Guilford Press.
- Lee, A. & Hankin, B.L. (2009). Insecure attachment, dysfunctional attitudes, and low self-esteem predicting prospective symptoms of depression and anxiety during adolescence. *Journal of Clinical Child and Adolescent Psychology*, 38, 219-31.
- Levendosky, A. A., Bogat, G. A., & Martinez-Torteya, C. (2013). PTSD Symptoms in young children exposed to intimate partner violence. *Violence Against Women*, 19 (2), 187-201.
- Likcani, A., Stith, S., Spencer, C., Webb, F., & Peterson F. R. (2017) Differentiation and Intimate Partner Violence, *The American Journal of Family Therapy*, 45:5, 235-249.
- Luo, S. & Klohnen, E. C. (2005). Assortative mating and marital quality in newlyweds: A couple-centered approach. *Journal of Personality and Social Psychology*, 88, 304-326.
- Makin-Byrd, K., & Azar, S. T. (2011). Beliefs and attributions of partner violence perpetrators: The physical and psychological violence of adolescent males. *Violence and Victims*, 26(2), 177-190.
- Martinez-Torteya, C., Bogat, G. A., Von Eye, A., & Levendosky, A. A. (2009). Resilience among children exposed to domestic violence: The role of risk and protective factors. *Child Development*, 80(2), 562–577.
- Maxwell, K., Callahan, J. L., Ruggero, C. J., & Janis, B. (2016). Breaking the Cycle: Association of Attending Therapy Following Childhood Abuse and Subsequent Perpetration of Violence. *Journal of Family Violence*, 31(2), 251–258.
- Murrell, A. R., Christoff, K. A., & Henning, K. R. (2007). Characteristics of domestic violence offenders: Associations with childhood exposure to violence. *Journal of Family Violence*, 22(7), 523–532.
- Og Mandino (n.d.). Og Mandino Quotes. Retrieved from <http://www.getsuccessquotes.com/quotes/og-mandino-quotes/>
- Osofsky, J.D. (2004). Community outreach for children exposed to violence. *Infant Mental Health Journal*, 25(5), 478-487.
- Papero, D. V. (1990). *Bowen family systems theory*. Boston, Mass.: Allyn and Bacon.
- Pears, K.C., & Capaldi, D.M. (2001). Intergenerational transmission of abuse: A two- generational prospective study of an at-risk sample. *Child Abuse & Neglect*, 25(11), 1439-1461.
- Pietromonaco, P.R., & Feldman Barrett, L. (2000). The internal working models concept: What do we really know about the self in relation to others? *Review of General Psychology*, 4, 155–175.
- Riggs, S.A. & Kaminski, P. (2010) Childhood emotional abuse, adult attachment, and depression as predictors of relational adjustment and psychological aggression. *Journal of Aggression, Maltreatment & Trauma*, 19(1), 75-104.
- Rhule-Louie, D. M., & McMahon, R. J. (2007). Problem behavior and romantic relationships: Assortative mating, behavior contagion, and desistance. *Clinical Child and Family Psychology Review*, 10, 53 – 100.
- Rosen, K. H., Bartle-Haring, S., & Stith, S. M. (2001). Using Bowen theory to enhance understanding of the intergenerational transmission of dating violence. *Journal of Family Issues*, 22, 124-143.
- Roisman, G.I., Collins, W.A. Sroufe, L.A. & Egeland, B. (2005) Predictors of young adults' representations of and behavior in their current romantic relationship: Prospective tests of the prototype hypothesis. *Attachment & Human Development*, 7, 105-121.
- Sefceck, J.A., Brumbach, B. H., Vasquez, G., & Miller, G .F. (2008). The evolutionary psychology of human mate choice, *Journal of Psychology & Human Sexuality*, 18:2-3, 125-182
- Simons, R.L., Gordon Simons, L., & Ebert Wallace, L. (2004). *Families, delinquency, and crime: Linking society's most basic institution to antisocial behavior*. Los Angeles: Roxbury.
- Smyke, A.T., Dumitrescu, A. & Zeanah, C. (2002) Attachment disturbances in young children. I: The Continuum of Caretaking Casualty. *Journal of the American Academy of Child & Adolescent Psychiatry*, 41(8), 972-982.

## Current Studies in Social Sciences II

- Straus, M.A., Gelles, R.J., & Steinmetz, S.K. (2006). *Behind closed doors: Violence in the American family*. New Brunswick, NJ: Transaction Publishers.
- Thornberry, T. P., Freeman-Gallant, A., & Love-grove, P. J. (2009). The impact of parental stressors on the intergenerational transmission of antisocial behavior. *Journal of Youth and Adolescence*, 38, 312 – 322.
- Wathen, C. & MacMillan, H. (2013). Children's exposure to intimate partner violence: Impacts and interventions. *Pediatrics & Helath*, 18(8). 419-422.
- Watkins, P. (2005). Police perspective: Discovering hidden truths in domestic violence intervention. *Journal of Family Violence*, 20(1), 47-54.
- World Health Organization. (2012). Understating and addressing violence against women. World Health Organization. Retrieved [https://apps.who.int/iris/bitstream/handle/10665/77432/WHO\\_RHR\\_12.36\\_eng.pdf;jsessionid=F64FE7718F2C37EFB6C76D622C4FCFFB?sequence=1](https://apps.who.int/iris/bitstream/handle/10665/77432/WHO_RHR_12.36_eng.pdf;jsessionid=F64FE7718F2C37EFB6C76D622C4FCFFB?sequence=1)
- Zayas, V., Mischel, W., Shoda, Y. & Aber, J. L. (2011) Roots of adult attachment: Maternal caregiving at 18 Months predicts adult peer and partner attachment. *Social Psychological and Personality Science*, 2(3), 289-297.
- Zeanah, C. H., Danis, B., Hirschberg, L., Benoit, D., Miller, D., & Heller, S. S. (1999). Disorganized attachment associated with partner violence: A research note. *Infant Mental Health Journal*, 20(1), 77–86.